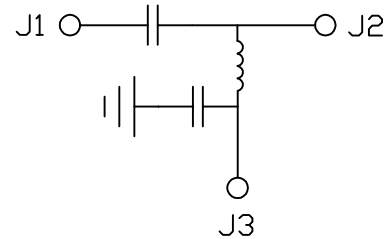
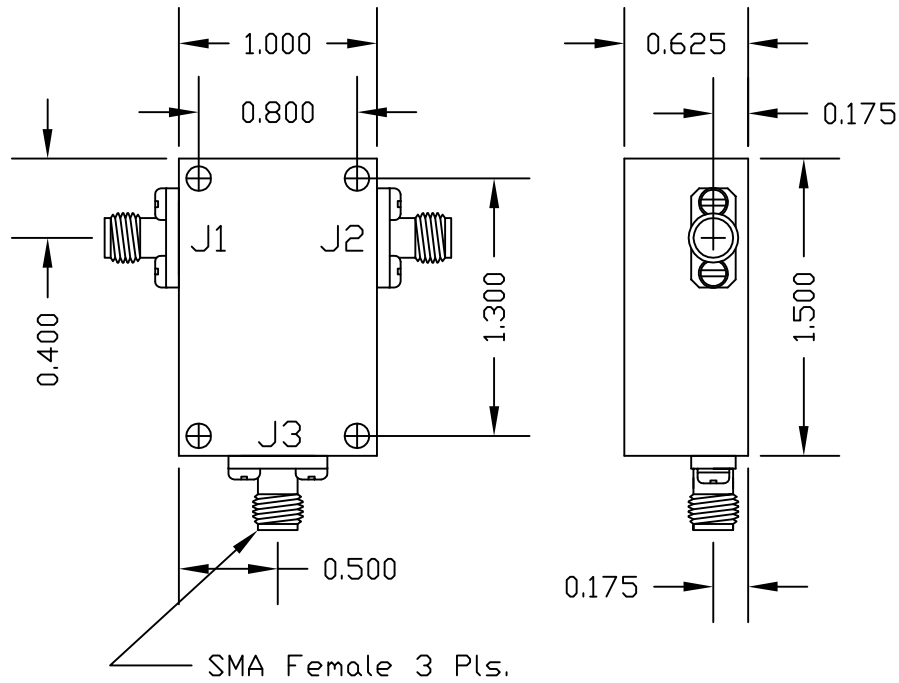



APPLICATION		REVISION			
NEXT ASSY	USED ON	LTR	DESCRIPTION	DATE	APPROVED



Specifications:

Frequency Range: 10 KHz to 20 GHz
 Insertion Loss: 1.1 db Max.
 VSWR: 1.45:1 Max.
 Isolation: 40db Min.
 DC Current: 500 ma Max. @ 50V Max.
 Temp. Range: -40 to +85 degree C.
 Input Power: 2 W CW @ 10KHz to 30KHz
 20 W CW from 40KHz to 20 Ghz

UNLESS OTHERWISE SPECIFIED DIMENSIONS ARE IN INCHES TOLERANCES ARE: FRACTIONS DECIMALS ANGLES ± .XX ±.03 ± .XXX ±.01	CONTRACT NO.		 TAYLOR MICROWAVE, INC. 14250 S.W. 23rd LANE, MIAMI FL 33175
	APPROVALS	DATE	
	DRAWN J.B.	3/24	
	CHECKED		
MATERIAL	E.E.	B.S.	3/24
	FINISH		
GREY PAINT		SIZE	CODE IDENT NO.
DO NOT SCALE DRAWING		A	0E3Y7
		DRAWING NO.	BT-A06-1
		SCALE	NONE
		CAD	13
		SHEET	1 OF 1