



# Bias Tee

# BT-G

## FEATURES

- 2000 ma Maximum Bias Current
- 10 KHz to 40 GHz bandwidth
- 50Vdc Blocking Voltage



## DESCRIPTION

The BT-GA01 has an impressive bandwidth. Its -3 dB bandwidth extends from 10 KHz (kilohertz) to beyond 40 GHz(gigahertz), which encompasses a broad spectrum of RF communication and wireless technologies.

## ELECTRICAL SPECIFICATIONS

P/N:	FREQUENCY RANGE	INSERTION LOSS MAX.	ISOLATION MIN.	VSWR MAX.	INPUT POWER	DC CURRENT ma(MAX)	DC VOLTAGE MAX.	DC BIAS RESISTANCE OHMS	COMMENTS
BT-G01-X	25kHz to 40GHz	1.75 db	40 db	1.7:1	10W	750	50	2.30	Loss <1.5db
BT-G02-X	125kHz to 40GHz	1.75 db	40 db	1.7:1	10W	2000	50	0.80	Loss <1.5db
DC Blocking Capacitance= 0.47uf DC Bias Inductance= 1.2 mH /250uH									

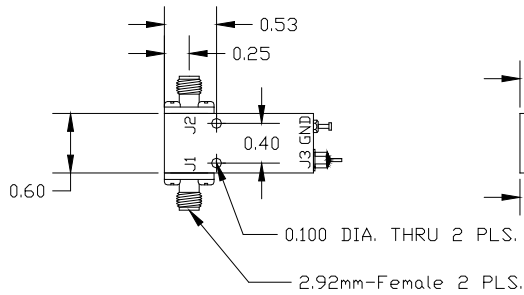


FIG.1

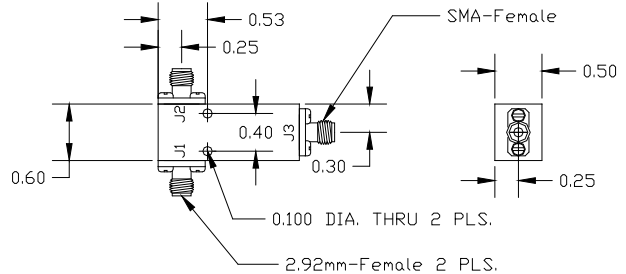
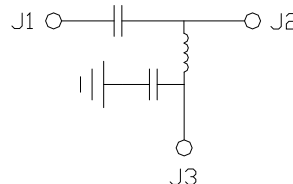


FIG.2

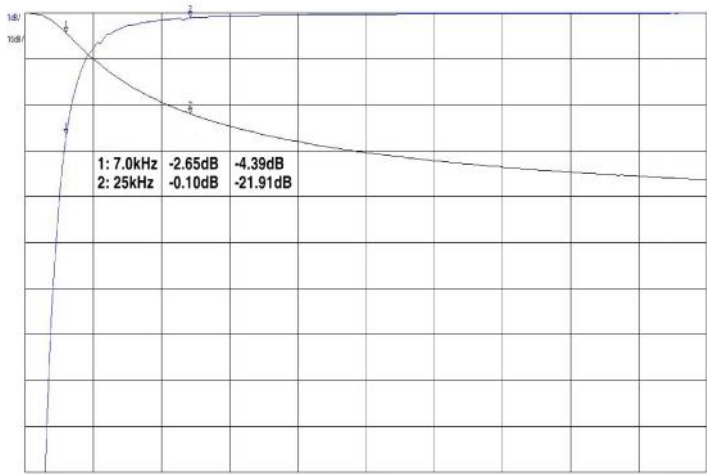
- Contact Factory for Custom Design.
- 1-Other Bandwidth Available.
- 2-Higher Isolation Available.
- 3-Contact factory for other outlines.
- 4-Available with 100Vdc Blocking Voltage
- Impedance 50 Ohm Nominal
- Temperature Range: -55 to +85°C
- Finish: Grey Paint per MIL-E-15090 Type II CL2



# TAYLOR MICROWAVE, INC.

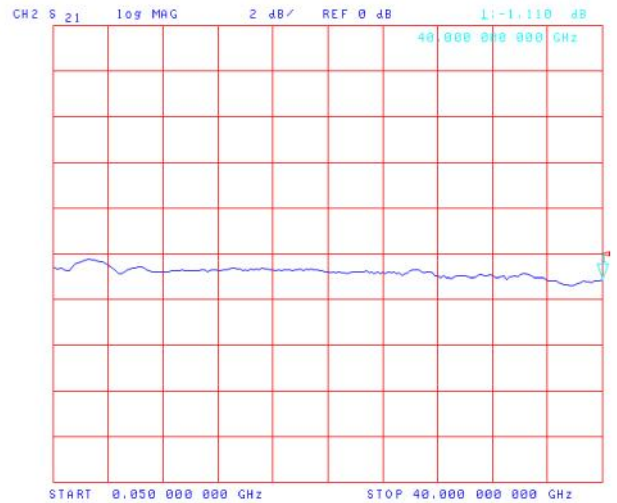
14250 S.W. 23rd Lane, Miami, FL 33175 • Tel.(305)244-2468 • TMI@taylormw.com

Insertion Loss/Return Loss

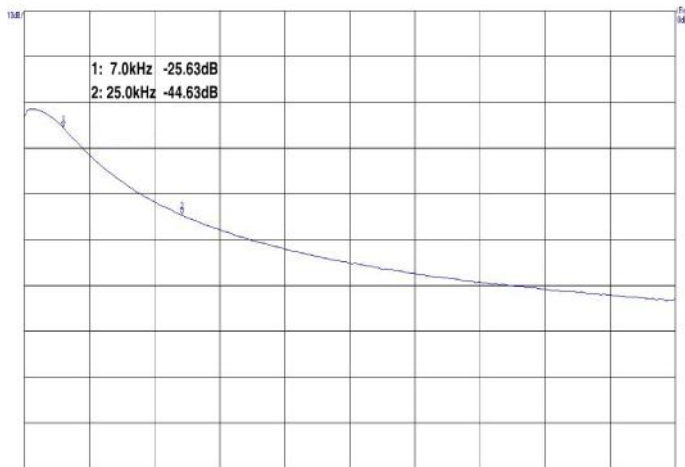


Start = 1kHz  
Stop = 100kHz  
Isolation

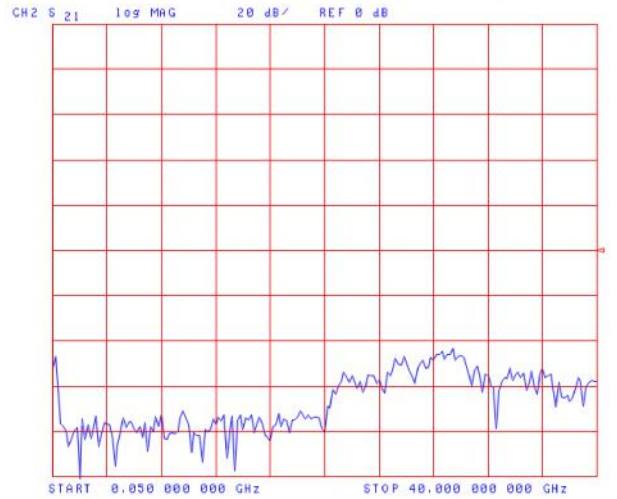
Insertion Loss



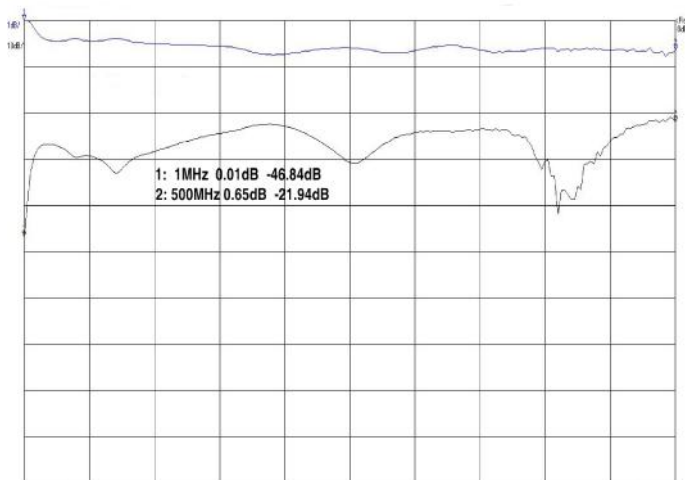
Isolation



Start = 1kHz  
Stop = 100kHz  
Insertion Loss/Return Loss



Return Loss Typ.



Start = 0.5MHz  
Stop = 500MHz

